

STP Policy Editor contribution

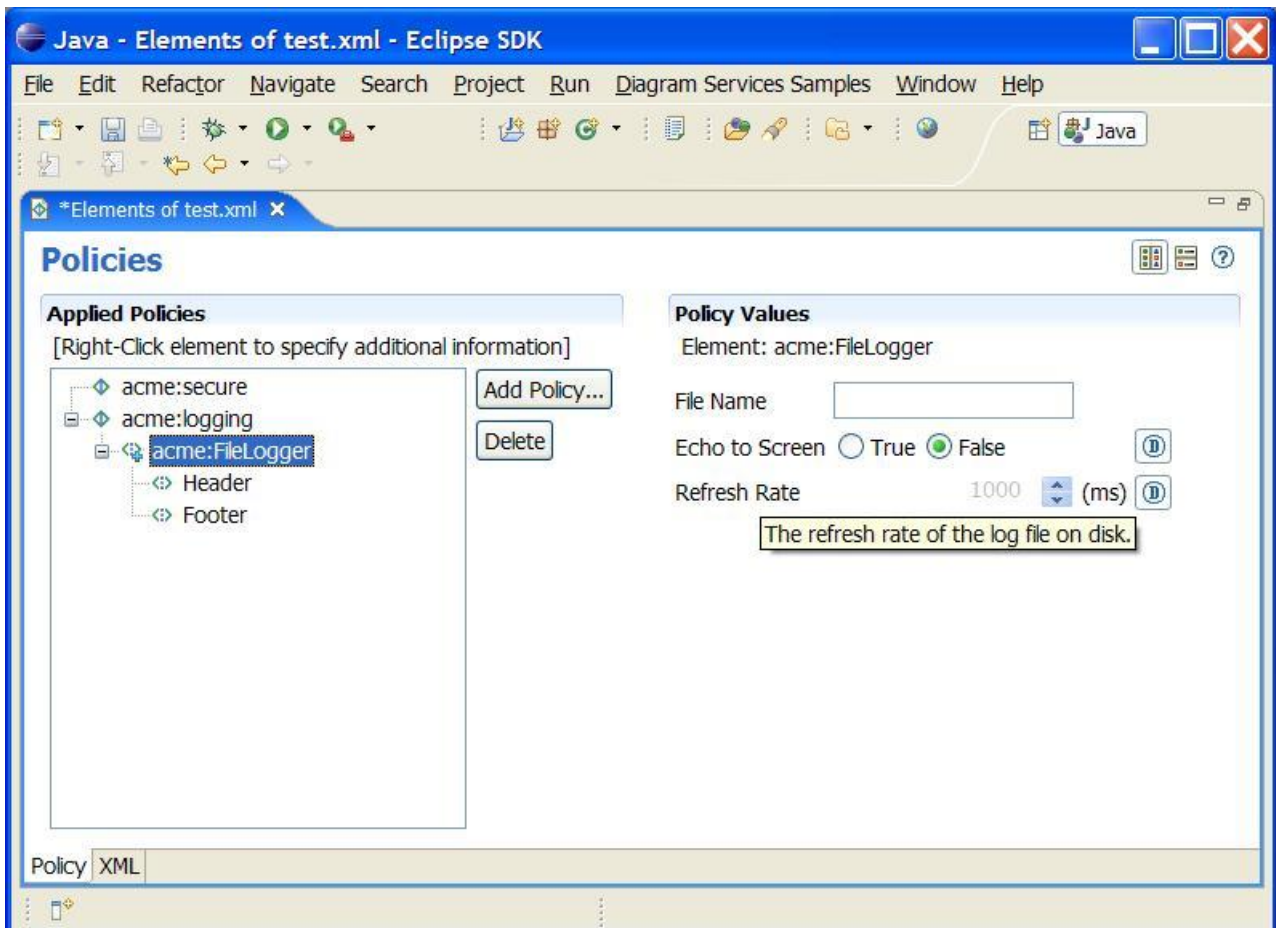
Details of Contribution:

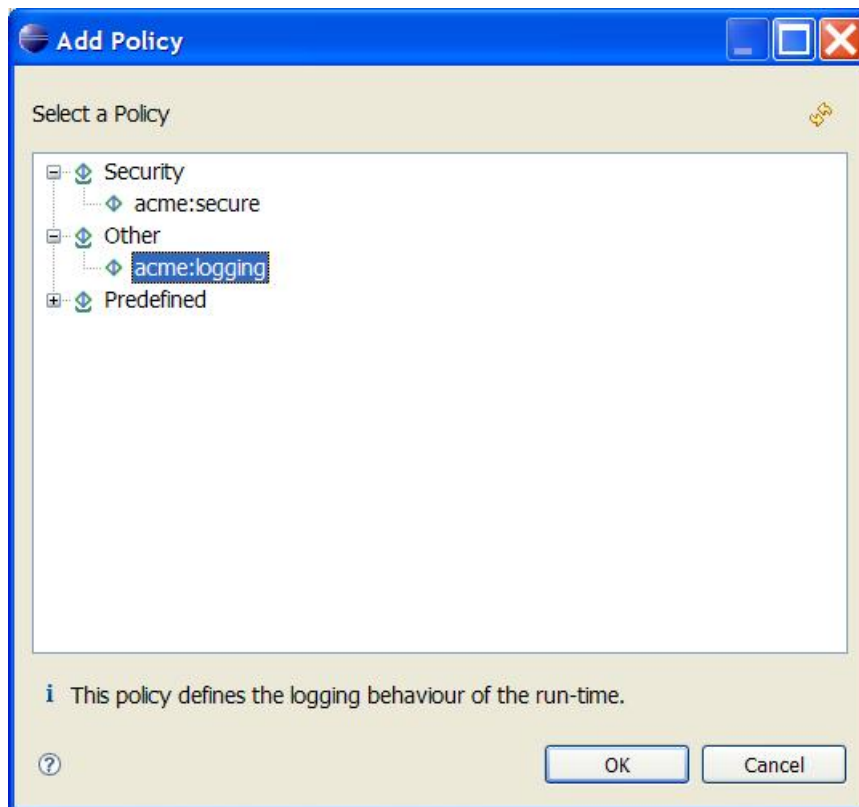
- SOA Policy Editor
- XEF XML Editing Framework

'Policy' is an important aspect of SOA design and operational governance and can serve to isolate differences between SOA runtime technologies. Policies are commonly expressed using the WS-Policy XML vocabulary (<http://www.w3.org/Submission/WS-Policy/>), which in turn uses domain-specific vocabularies to describe specific policy content.

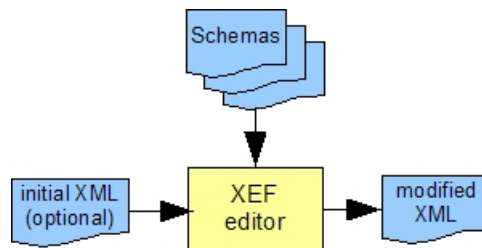
This submission represents the contribution of a graphical Policy Editor to the Eclipse STP project. It brings the concept of policy to the STP and the editor is designed to be used by end-users of SOA tooling suites.

The SOA Policy Editor simplifies the creation of Policies by offering an easy-to-use editor to construct Policy sets and edit individual Policies, based off a Policy Catalog.





The SOA Policy Editor is based on an extensible framework called XEF (for XML Editing Framework), which dynamically synthesizes its widgets based on the XML-Schema of the XML elements that are being edited. Widgets include various kinds of controls (text fields, combo's, radio buttons, check boxes) as well tool-tips, dynamic help and a tree structure. Input to the editor is the current XML document (e.g. WS-Policy document) and the schemas on which the XML is based. The output is XML that adheres to these schemas.



Existing Similar Technology

WTP and PDE both provide editors that operate on XML and XML Schema input.

The WTP editors are focussed on editing documents using either a text-based approach or a graphical metaphor that is strongly schema-structural based. The Policy Editor uses a metaphor that effectively hides the physical nature of the schema and XML documents, allowing the user to focus solely on the task of constructing Policy documents and adding particular values.

The PDE extension editor is similar in look and feel to the Policy Editor, in that it uses schema to drive a visual metaphor, but it is particularly specialized to define Eclipse extensions and is thus a core part of the platform. The Policy Editor is more focussed on general XML editing capabilities in the context of Policy.