

SOA Symposium Intro

Eclipse CON Europe 2012

Agenda

- **Intro** (Adrian Mos) 10'
- **Models as Operational Documentation & SOA Use Case** (Marc Dutoo) 30'
- **Talend and EasySOA : from registry to execution and back again** (Cédric Carbone, Marc Dutoo) 30'
- **Towards Multi Platform Enterprise Processes** (Marc Dutoo) 25'
- Break 15'
- **DSL integration in BPMS/SOA through Mangrove** (Adrian Mos) 30'
- **Stardust – an Eclipse Platform for BPM, SOA and Document Processing** (Marc Gille) 60'
- **PANEL DISCUSSION**

Eclipse SOA

- Goal: one-stop destination in Eclipse for SOA/BPM
- Editors and runtimes that cover the entire lifecycle of BPM and SOA projects
- <http://eclipse.org/soa/>

Stardust News

- Full-blown, mature, production-proven BPM suite
- Entire source code contributed to Eclipse
- Covers interactive workflow, document processing and service integration
- Fully integrated in Eclipse (e.g. modeling, refactoring, debugging, integrated runtime)
- Connectivity/potential for collaboration exists to/with other SOA (and more) project, e.g. BPMN2 Metamodel, BPMN 2 Modeler, Nuxeo, ORION

Project Lead: Bob Brodt
bbrodt@redhat.com

Properties

Default Process

Description
A Process Diagram describes a sequence or flow of Activities in an organization with the objective of carrying out work. A Process is depicted as a graph of Flow Elements, which are a set of Activities, Events, Gateways, and Sequence Flows that define finite execution semantics. Processes can be defined at any level from enterprise-wide Processes to

Data Items

Diagram

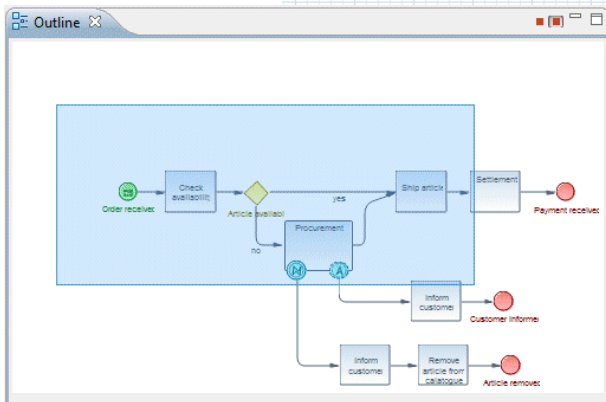
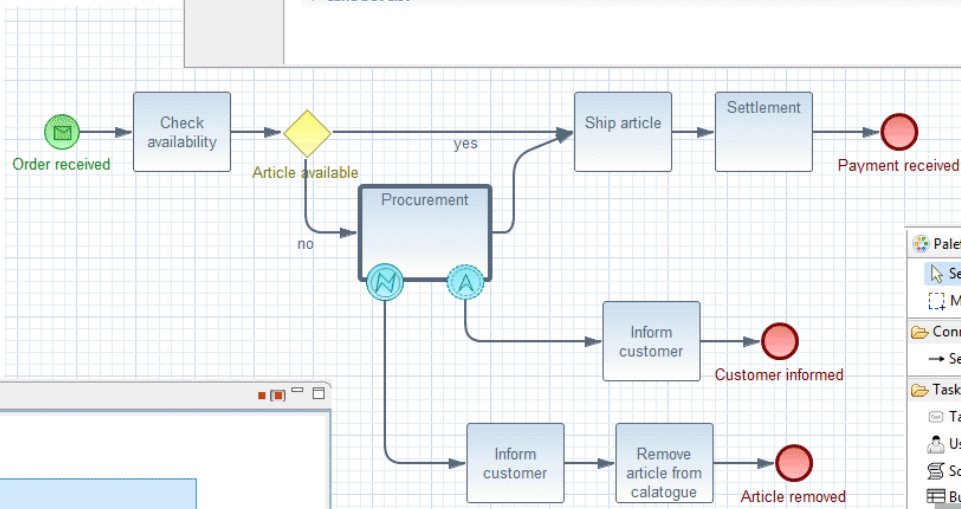
Definitions

Interfaces

Attributes

Id: process_1
Name: Default Process
Process Type: None
Is Executable:
Is Closed:

Lane Set List



Palette

- Select
- Marquee
- Connectors
 - Sequence Flow
- Tasks
 - Task
 - User Task
 - Script Task
 - Business Rule
- Gateways
 - Inclusive Gateway
 - Exclusive Gateway
 - Parallel Gateway
- Events
 - Start Event
 - End Event
 - Throw Event
 - Catch Event
- Event Definitions
- Data Items
- Other

BPMN2 MODELER

Compatibility and Dependencies

- Incubation Project
 - current version 0.1.0 with service release planned in near future
- BPMN 2.0 Spec Compliant
- Graphiti versions 0.8.2 & 0.9.0
- EMF
- Supports Eclipse 3.6 through 4.2
- Uses MDT BPMN2 meta model

Enjoy the Symposium! 😊