

atlas
professional

Modelling Automotive Control Systems

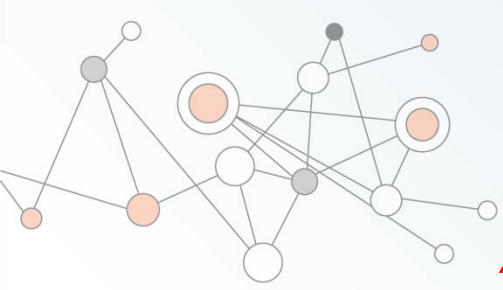
Eric Woestman

woestman@ensoftcorp.com

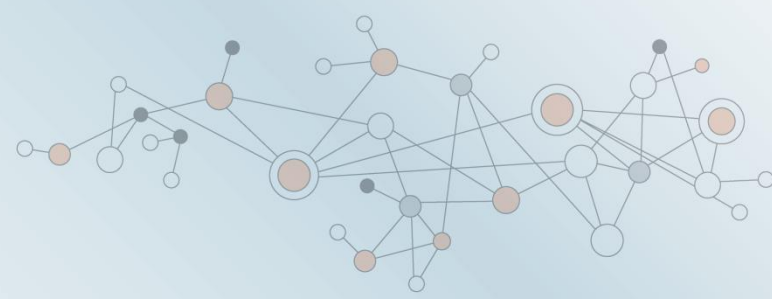
Theodore Murdock

Theodore.Murdock@ensoftcorp.com

www.ensoftcorp.com/atlas

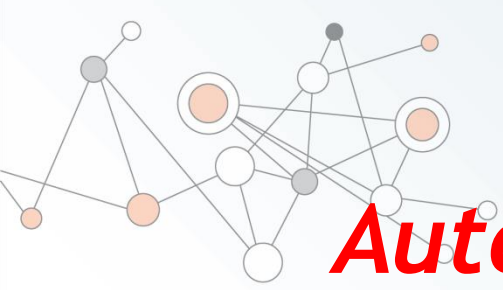


Agenda

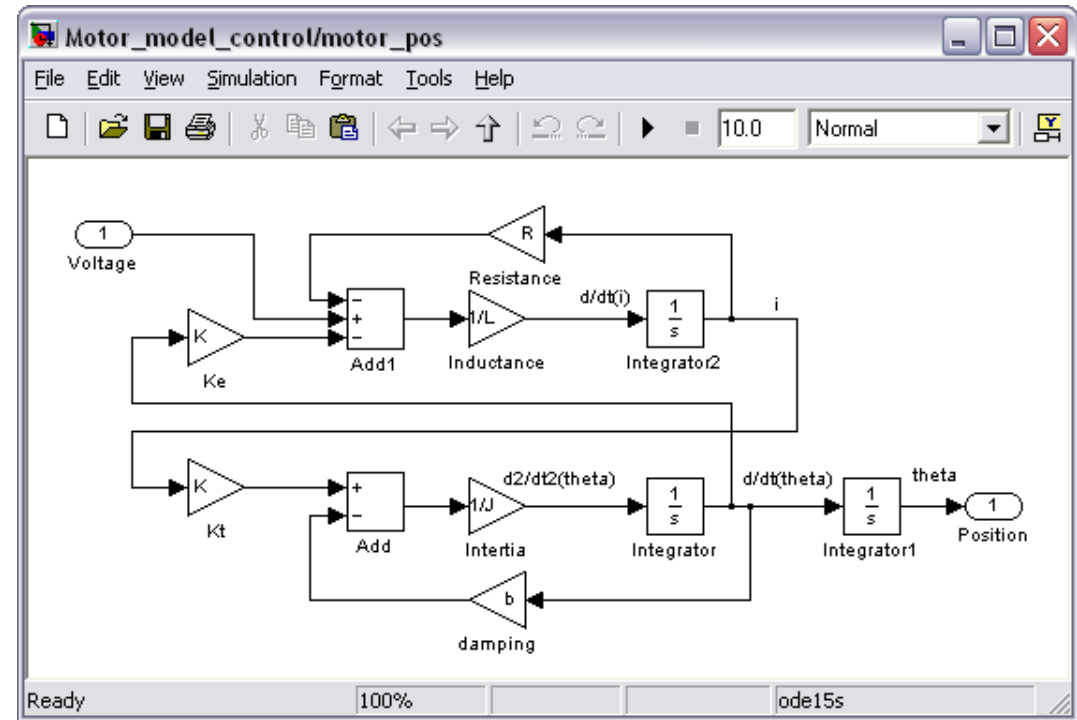


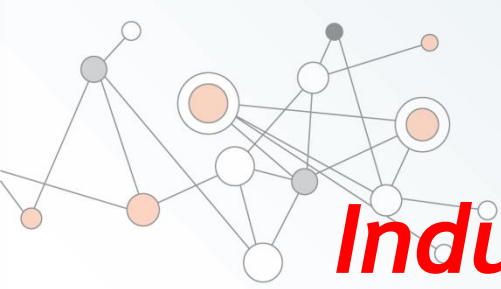
atlas
professional

- Intro to Control Systems
- Industry Trends
- Industry Challenge
- Modelling in Eclipse
- From C AST to Simulink
- C as Data Flow
- Demo



Automotive Control Systems



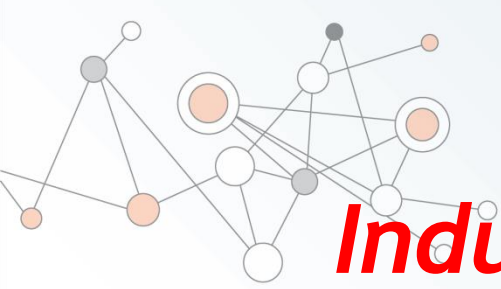


Industry Trends



atlas
professional

- Industry has embraced model based development
- Migration from C to Simulink models
- Simulink models allow better simulation and verification



Industry Challenge



atlas
professional

- Ford Motor Co. converted 20% of code base^[1]
- Manually converting is not acceptable
- Migrating other models as needed

Can we build a tool to automate the conversion?

1: Talk given by Ford Motor Co. at the dSPACE 2013 North American Automotive User Conference.



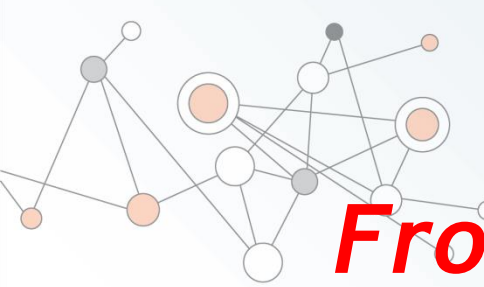
Modelling in Eclipse

- Eclipse has a number of great modelling tools
- Code is still stuck in C
- Can parse C to AST using Eclipse C Development Tools (CDT)



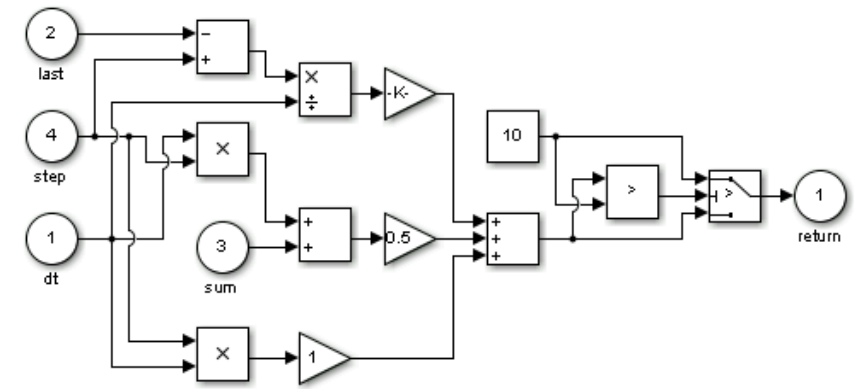
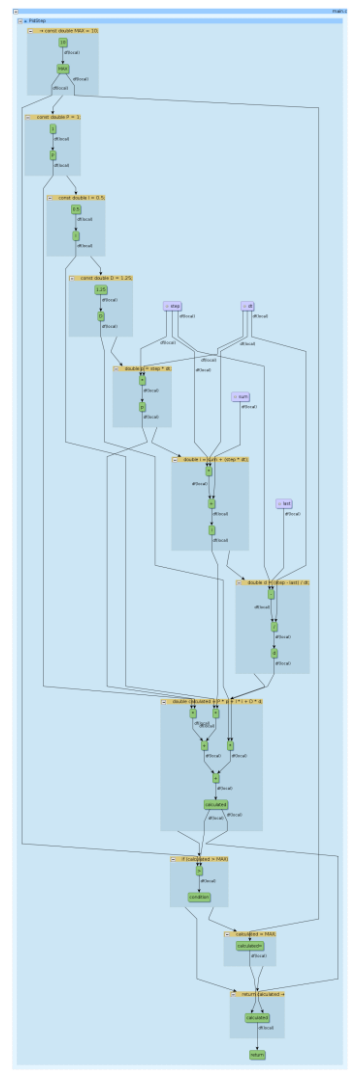
From C AST to Simulink

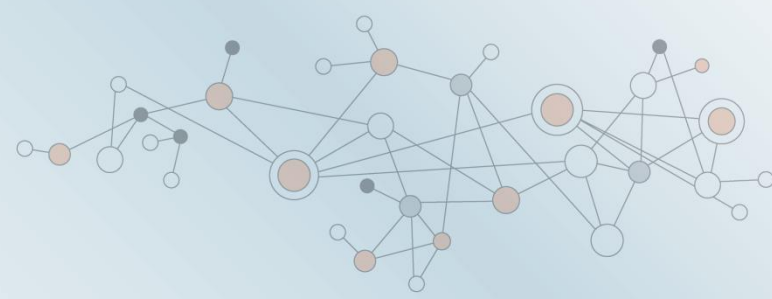
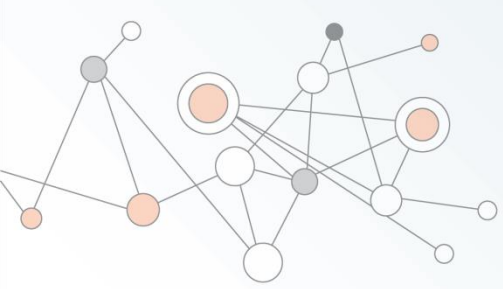
- Atlas indexes the AST
- Stores relations in a graph
- Common relations
 - Declaration, definition
 - Invoke
 - Data flow
 - Control flow
- Data flow graph is similar to Simulink model



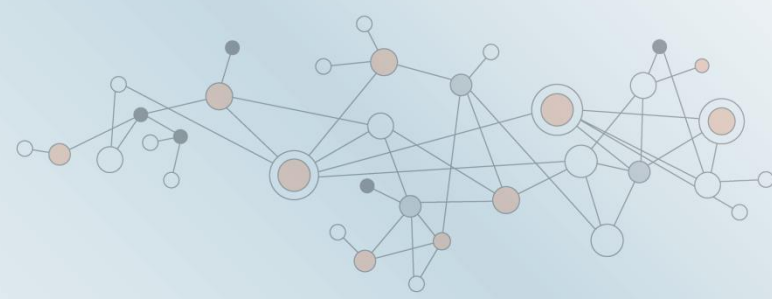
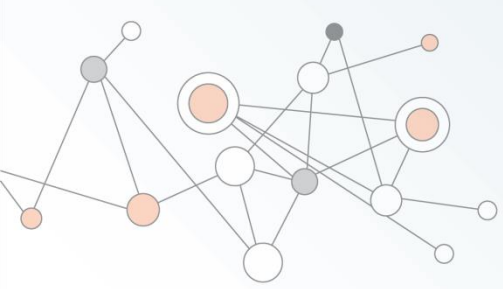
From C AST to Simulink

```
double PidStep(double dt, double sum,  
              double last, double step)  
{  
    const double MAX = 10;  
  
    const double P = 1;  
    const double I = 0.5;  
    const double D = 1.25;  
  
    double p = step * dt;  
    double i = sum + (step * dt);  
    double d = (step - last) / dt;  
  
    double calculated = P * p + I * i + D * d;  
  
    if(calculated > MAX)  
        calculated = MAX;  
  
    return calculated;  
}
```

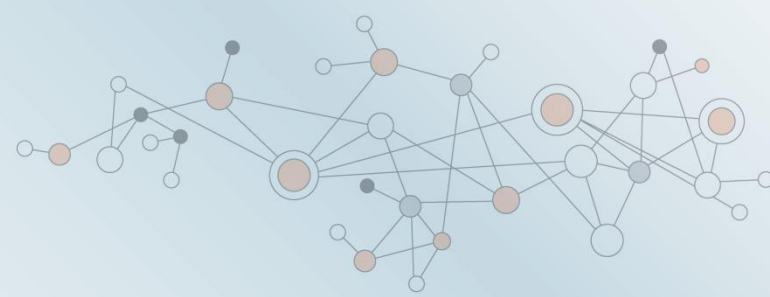
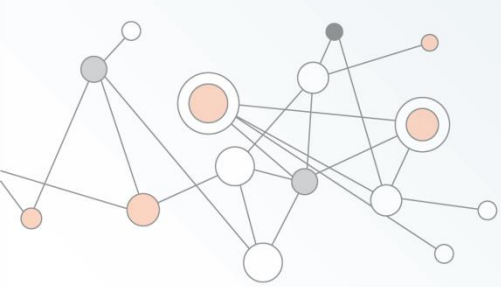




Demo!



Questions?



atlas
professional

Thanks
for coming

www.ensoftcorp.com/atlas