

# BIRT Chart Types Enhancements

Functional Specifications

Draft 2: August 5, 2005

## Abstract

*This document describes the chart types support for BIRT 2.0. That includes new chart types and improvement of existing chart types*

## Document Revisions

Draft	Date	Primary Author(s)	Description of Changes
1	July 13, 2005	David Michonneau	Initial Draft
2	August 5, 2005	David Michonneau	Extended 3D rotation to three axes. Changed anchor to position for fitting curve label. FittingCurve now applies to Series classes. Added Line Chart coloring from Palette. Added Mockups

## Table of Contents

<b>1. Introduction .....</b>	<b>2</b>
<b>2. 3D Charts .....</b>	<b>2</b>
2.1 3D Definition .....	2
2.2 Chart types in 3D .....	3
2.3 API .....	4
2.4 Chart Builder .....	5
<b>3. Pie Chart .....</b>	<b>5</b>
3.1 Explosion .....	5
3.2 Minimum Slice .....	7
3.3 Chart Builder .....	8
<b>4. Line Charts .....</b>	<b>8</b>
4.1 Curve Fitting .....	8
<b>5. Meter/Dial Charts.....</b>	<b>11</b>
5.1 Definition.....	11
5.2 API .....	11
5.3 Chart Builder.....	12
<b>6. Area Charts .....</b>	<b>12</b>
6.1 There are three enhancements in bugzilla requiring this new chart type: .....	12
6.2 Definition.....	12
6.3 API .....	12
6.4 Chart Builder.....	12

## 1. Introduction

Chart types are a combination of series types and chart attributes. They can be divided into two categories: charts with axis and chart without axis (such as pie charts). New series types will be provided, as well as improvements of the existing ones. Some new chart attributes will also be added to support the new types.

This document will focus on the functional specifications of the new and improved types and also list the model/API changes.

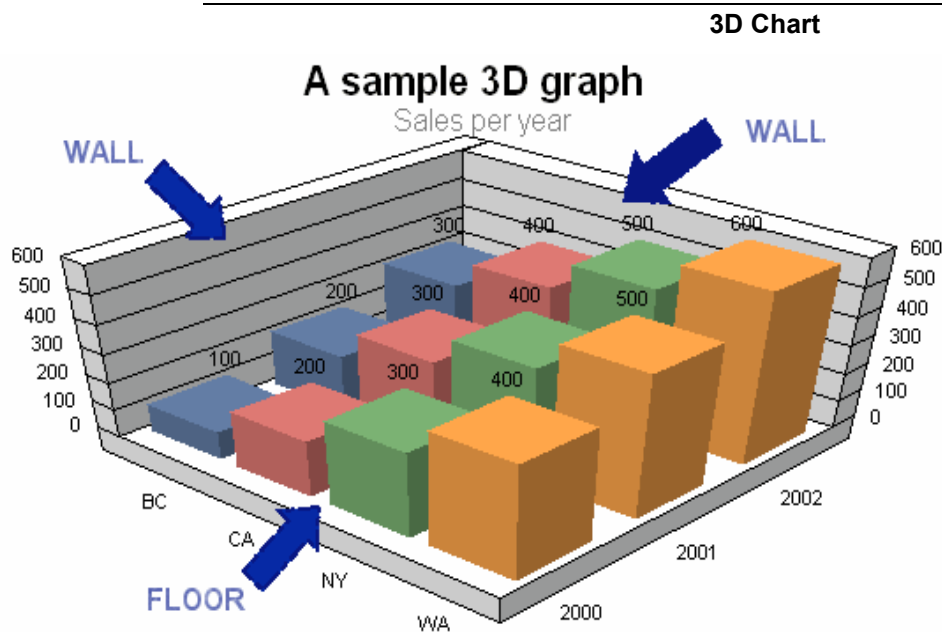
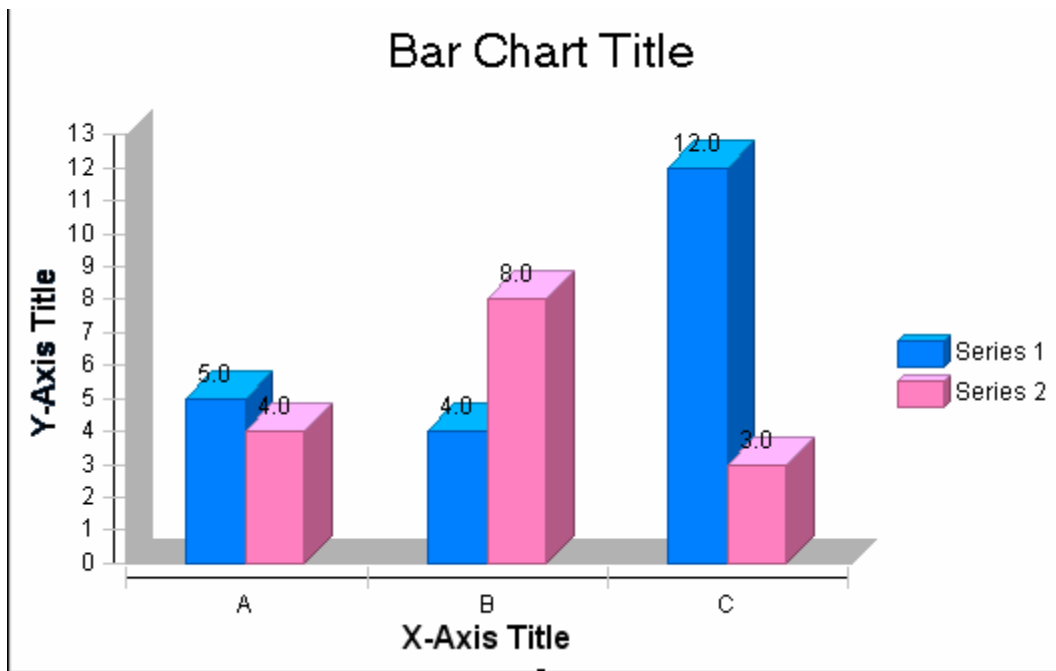
## 2. 3D Charts

### 2.1 3D Definition

BIRT 1.0.1 support Charts in 2D and 2D with depth. 2D with depth (sometimes mentioned as 2.5D) is not to be confused with real 3D Charts. Here is a diagram outlining the difference between the two:

---

**Chart 2D with depth**



*Copyright, 2004 - Actuate Corporation*

The 3D chart not only displays the series with depth: each series is placed on a different plan. Additionally it is also possible to rotate the 3D chart from any angle. Walls and floors are also displayed to enhance the 3D appearance, but they can be hidden.

## 2.2 Chart types in 3D

Here is the list of chart types where you can apply 3D:

- Bar Charts
- Line Charts
- Area Charts

## 2.3 API

### 2.3.1 3D attribute

Although the current engine cannot render 3D charts yet, the existing model API support the 3D attribute. The Chart interface has two methods to set/get the chart dimension (now used for 2D/2D with depth):

```
public interface Chart extends Eobject
{
    ...
    ChartDimension getDimension();
    void setDimension(ChartDimension value);
    ...
}
```

The 3D value is represented by ChartDimension.THREE\_DIMENSIONAL\_LITERAL

### 2.3.2 Angle attribute

The angle attribute to rotate the chart will be added in ChartWithAxes interface through 2 methods:

```
public interface ChartWithAxes extends Chart
{
    ...
    3DAngles get3DRotation();
    void set3DRotation( 3DAngles angle);
    ...
}

public interface 3DAngles
{
    double getXAngle();
    double getYAngle();
    double getZAngle();
    void setXAngle( double angleInDegrees );
    void setYAngle( double angleInDegrees );
    void setZAngle( double angleInDegrees );
}
```

Each of the rotation angle will be applied clockwise, and must be within the 0-90 range. The 3DAngles property is only effective for 3D charts and will be ignored otherwise.

### 2.3.3 Floor/Wall attributes

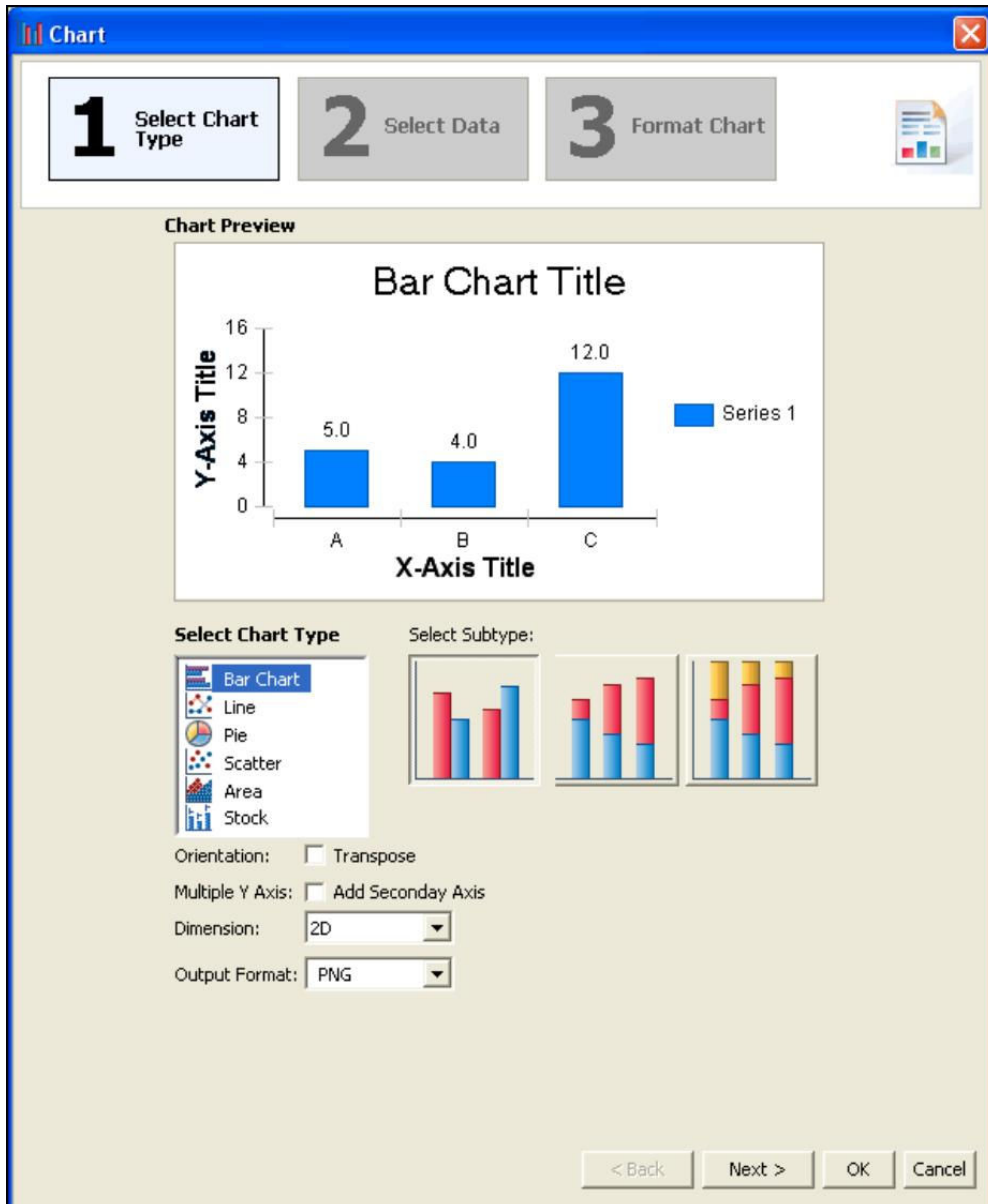
The floor and wall attributes are already defined in ChartWithAxes interfaces:

```
public interface ChartWithAxes extends Chart
{
    ...
    Fill getFloorFill();
    void setFloorFill(Fill value);
    ...
    Fill getWallFill();
    void setWallFill(Fill value);
    ...
}
```

}

## 2.4 Chart Builder

The 3D attribute will be added to the Dimension combo list in the Chart Builder, which now holds the 2D and 2D with depth values. It will only be available when bar/line/area chart type is selected.



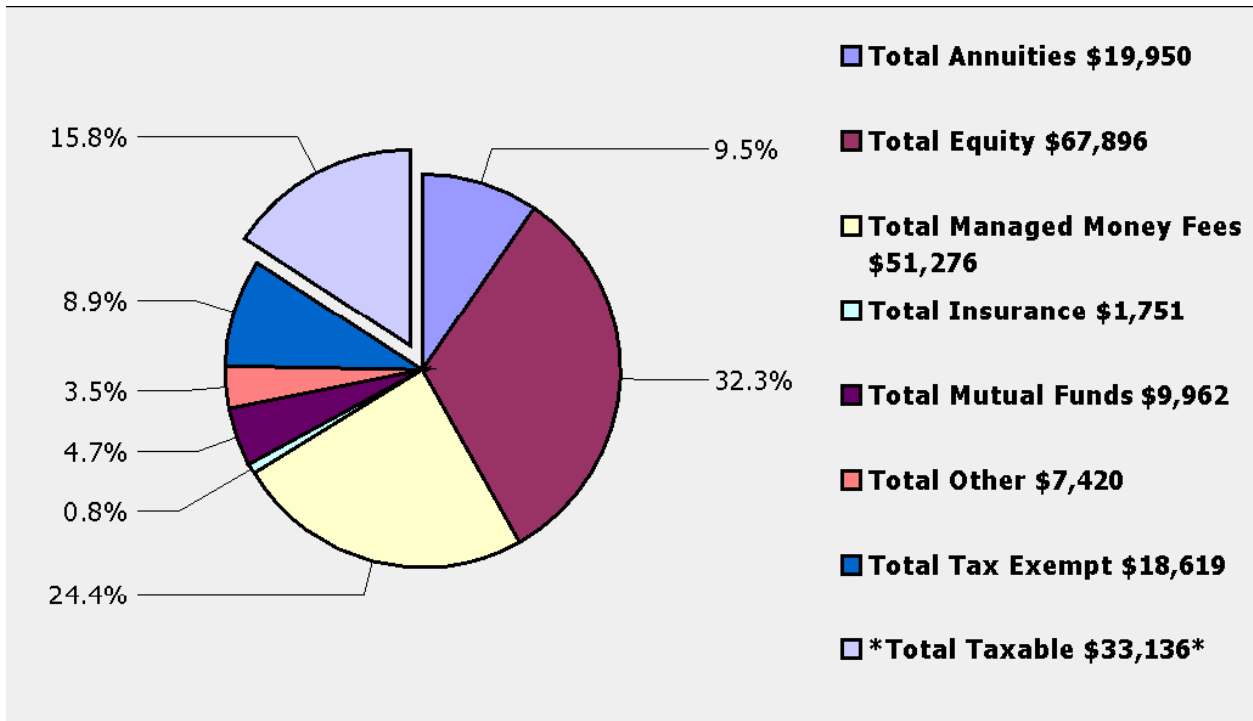
## 3. Pie Chart

Two improvements will be added to the Pie Chart type: explosion based on expression, and a minimum slice feature.

### 3.1 Explosion

Pie Charts can be exploded through an explosion attribute, but this applies uniformly to all the slices. Here is how it looks like:

The new feature will allow setting the explosion of the slices based on an expression: this way the user can highlight some particular slices. Here is an example of a chart with only one exploded slice:



The expression can access, among others, the value of the current slice (absolute or in percentage), as well as the value of the base serie it represents. TBD

If no expression is set, the explosion will apply to all slices. If the expression is set, the explosion will only apply to slices where the expression evaluates to true.

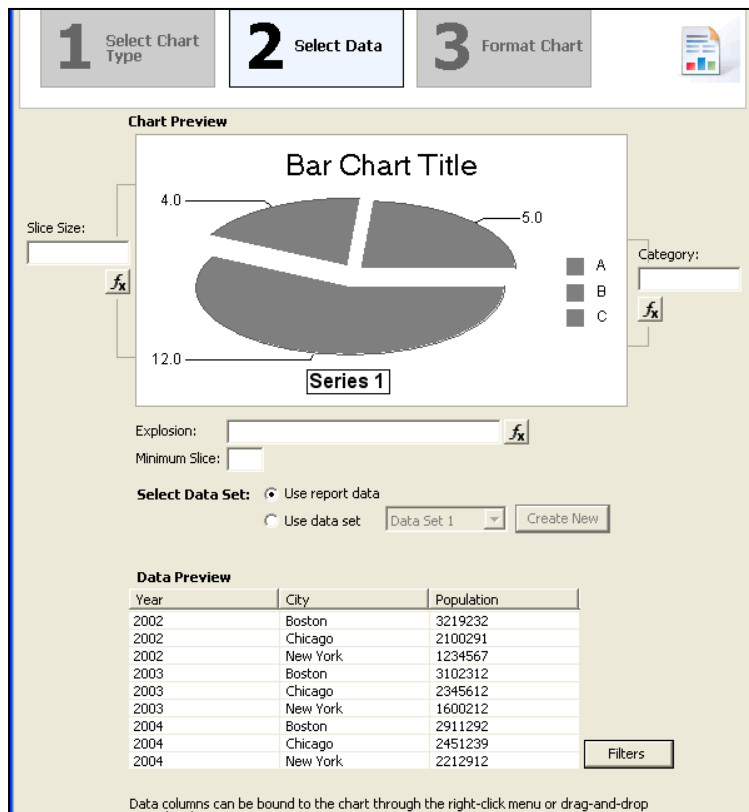
### 3.1.1 API

A new method `setExplosionExpression` will be added to `PieSeries` interface:

```
public interface PieSeries extends Series
{
    ...
    public void setExplosionExpression( String expression );
    public String getExplosionExpression( );
    ...
}
```

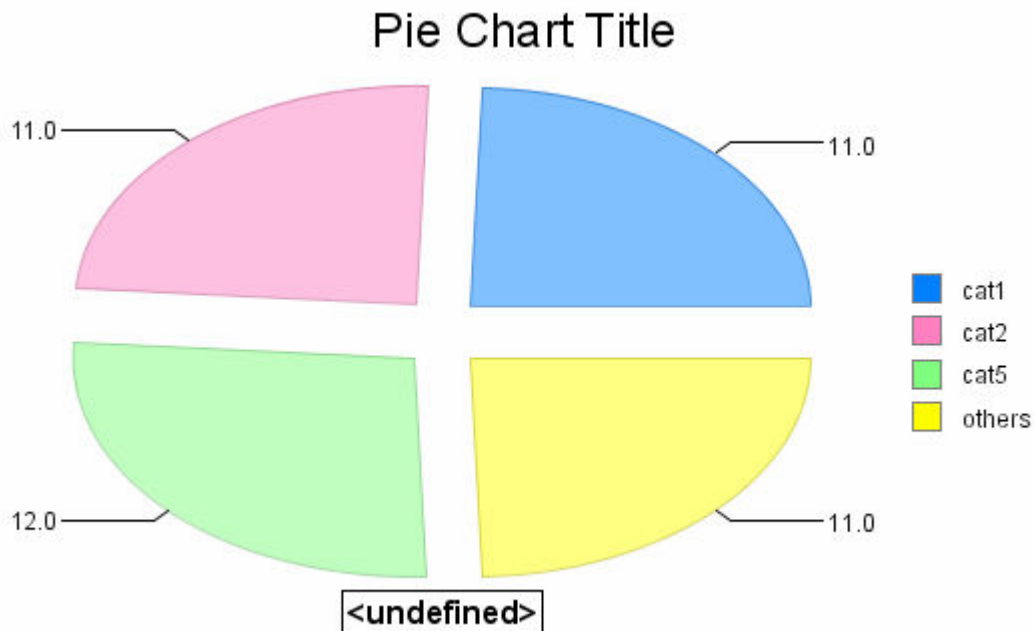
### 3.1.2 Builder UI

The Chart Builder UI will provide a new textbox with a scriptbuilder button next to the explosion attribute in the `PieSeries` screen.



### 3.2 Minimum Slice

With this feature, the user has the ability to specify the minimum value (absolute or in percentage) for a slice. Values under that minimum will be aggregated under an “others” label. In this example, the min value is 10, “others” is the sum of 6 (cat3) and 4 (cat4):



### 3.2.1 API

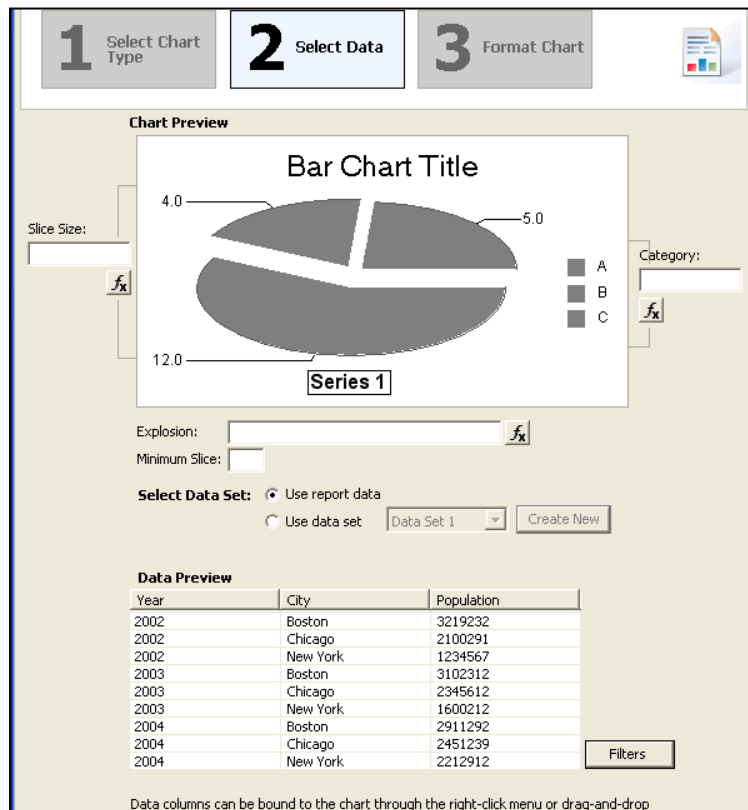
Several methods will be added to the ChartWithoutAxes interfaces in order to set/get:

- the value of the minimum slice
- the value type of the minimum slice (percent vs absolute). Default is absolute
- the label of the minimum slice. Default is “others”, internationalized

This feature will be applicable to all charts without axes.

```
public interface ChartWithoutAxes extends Chart
{...
    public void setMinSlice( double value );
    public double getMinSlice( double value );
    public void setMinSlicePercent( boolean isPercent );
    public boolean getMinSlicePercent( );
    public void setMinSliceLabel( String label );
    public String getMinSliceLabel( );
    ...
}
```

### 3.3 Chart Builder



## 4. Line Charts

### 4.1 Curve Fitting

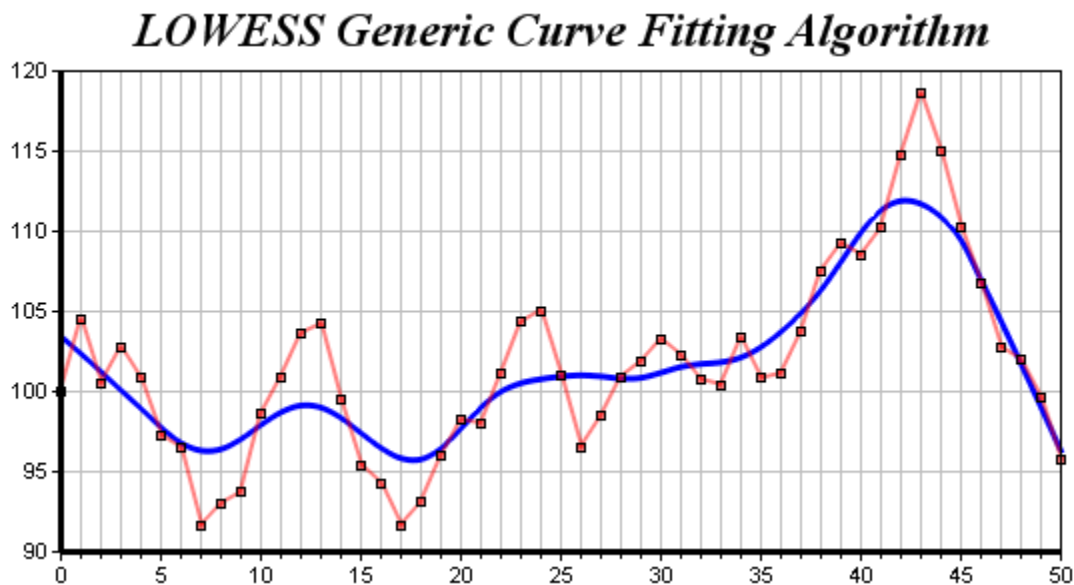
This new feature will be available for Series of Chart With Axes, including Line, Area, Scatter, Stock and Bar charts: curve fitting. This is an enhancement filed in bugzilla:

[https://bugs.eclipse.org/bugs/show\\_bug.cgi?id=87823](https://bugs.eclipse.org/bugs/show_bug.cgi?id=87823)



#### 4.1.1 Definition

Here is an example of curve fitting chart:



The blue line shows the general trend of the data. The idea is to find a mathematical model representing the data. This is usually done by mathematical regression and there are different algorithms available. For instance one approach is the user providing a parameterized function that he believes represents the data, the algorithm will compute the best approximation of the parameters based on the data points. Alternatively, it is possible the user does not assume any particular function. Several algorithms are available, the example shows the LOWESS algorithm.

The goals of curve fitting are numerous: once a curve can be computed, it is possible to seek its area, maxima, minima, tangentes, peak values, etc...

Specification

BIRT Chart will use the LOWESS algorithm, without parameterized function provided by the user. The curve will be drawn over the line chart in a color chosen by the user. No characteristics will be computed from the curve.

#### 4.1.2 API

A new interface will be added

```
public interface FittingCurve
{
    LineAttributes getLineAttributes();
    void setLineAttributes(LineAttributes value);
    Label getLabel();
    void setLabel(Label value);
    Position getLabelPosition();
    void setLabelPosition(Position value);
    void unsetLabelPosition();
}
```

New methods will be added to the LineSeries, BarSeries, and StockSeries interface:

```
public interface LineSeries extends Series
```

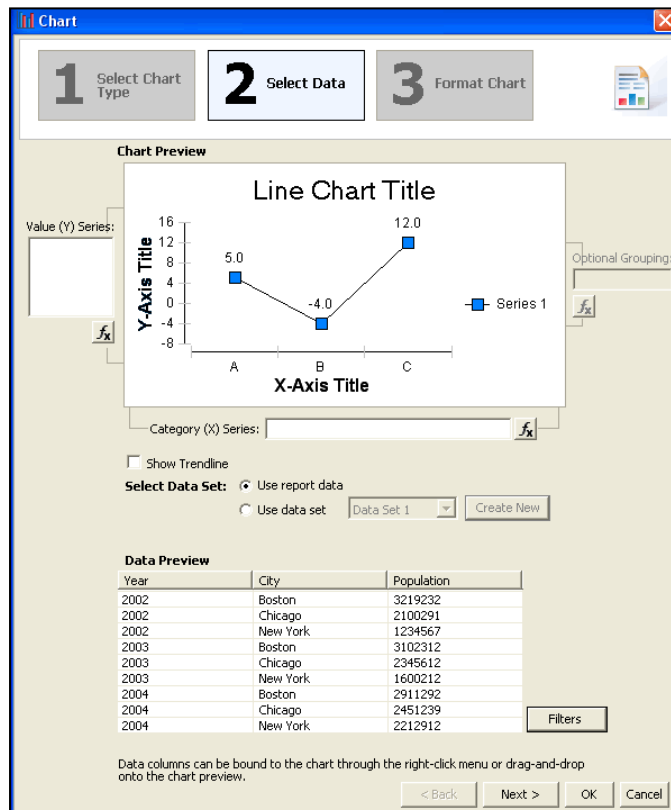
```

{
    ...
    setFittingCurve( FittingCurve );
    FittingCurve getFittingCurve( );
    ...
}

```

### 4.1.3 Chart Builder

The Chart Builder UI will provide a checkbox to show the fitting curve, and a property sheet to set its attributes.



## 4.2 Line coloring from Palette

### 4.2.1 Bugzilla Entries

[https://bugs.eclipse.org/bugs/show\\_bug.cgi?id=100406](https://bugs.eclipse.org/bugs/show_bug.cgi?id=100406)

### 4.2.2 Feature Description

Allow the line color for a given serie to follow the palette colors when series grouping is applied. The user will have the choice to choose a fixed color or use the palette colors.

### 4.2.3 API Change

TBD

## 5. Meter/Dial Charts

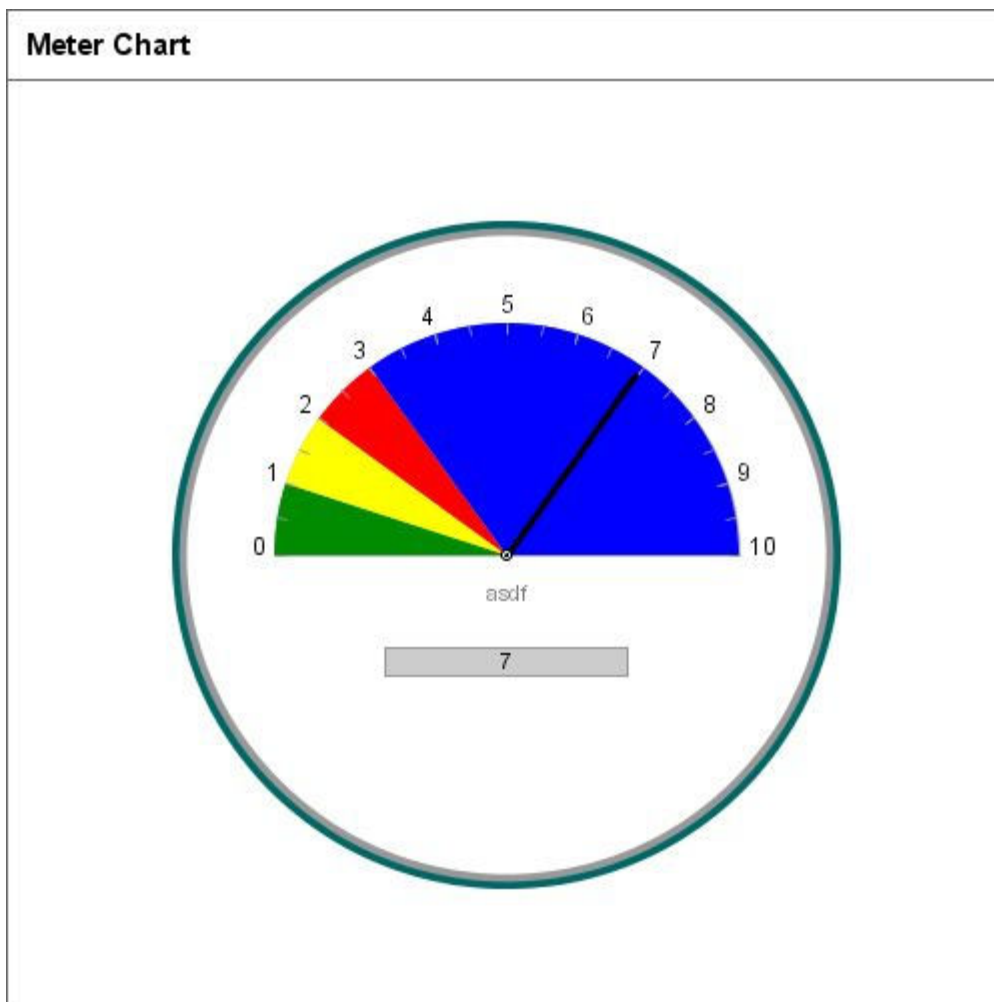
### 5.1 Bugzilla Entries

This is a new Chart type, part of the “chart without axis” family. This is an enhancement filed in bugzilla: [https://bugs.eclipse.org/bugs/show\\_bug.cgi?id=101646](https://bugs.eclipse.org/bugs/show_bug.cgi?id=101646)

### 5.2 Definition

“Meter charts are useful for displaying the current value of a certain measurement. The value is indicated by a pointer and the scale of the meter dial. The background of the meter can be divided into regions with different colors, each representing a range of measurement values. The meanings of regions can be displayed in tooltips as the mouse pointer moves over them. Example of meter charts or dial graphs can be gauges, speedometers, or clocks.” (Bugzilla entry)

Here is an example of a meter/dial chart:



### 5.3 API

TBD

## 5.4 Chart Builder

TBD

## 6. Area Charts

### 6.1 There are three enhancements in bugzilla requiring this new chart type:

101648,101651,101407

### 6.2 Definition

Area charts are very similar to Line Charts, the only difference being that the area between the X axis and the line is filled in color. The painted areas can be set as transparent or opaque (transparent being the default for a 3D Area Chart, whereas opaque is the default for a 2D Area Chart).

Area charts benefit of course of all the Line Chart features. Let's only mention they can be stacked, and percent stacked as well, shown in 2D, 2D with depth or 3D.

### 6.3 API

The transparency of the Area is controlled on the Series interface level:

```
public interface Series extends EObject
{
    ...
    boolean isTranslucent();
    void setTranslucent(boolean value);
    ...
}
```

The AreaSeries simply extends the LineSeries interface, without any new method:

```
public interface AreaSeries extends LineSeries
{
}
```

Note that by default no marker is shown for the AreaSeries

### 6.4 Chart Builder

A new type will be added in the first screen of the builder for Area Charts. It can be declined in stacked and percent stacked as well.

The transparency of the area will be set in the Y series attribute page.

Chart

1 Select Chart Type

2 Select Data

3 Format Chart

Chart Preview

Bar Chart Title

Y-Axis Title

16  
12  
8  
4  
0

5.0  
4.0  
12.0

A  
B  
C

X-Axis Title

Series 1

Select Chart Type

Bar Chart

Line

Pie

Scatter

Area

Stock

Select Subtype:

Orientation: ☐ Transpose

Multiple Y Axis: ☐ Add Secondary Axis

Dimension: 3D

Angle (0-90):

Output Format: PNG

< Back

Next >

OK

Cancel