



openMDM[®] eclipse working group

foundation meeting

July 11th, AUDI AG Ingolstadt

Agenda



10:00 Uhr	Begrüßung	15 Min.	H. Seitz (Audi)
10:15 Uhr	Vortrag „Eclipse – getting started“	45 Min.	H. Müller (Eclipse)
11:00 Uhr	Kaffeepause	15 Min.	alle
11:15 Uhr	Konstituierung / Wahl der WG-Gremien	60 Min.	alle
12:15 Uhr	Zusammenarbeitsmodell Community Cycle	30 Min.	H. Wittig (Audi)
12:45 Uhr	Mittagspause	60 Min.	alle (Kantine)
13:45 Uhr	Ansätze zum Branding	30 Min.	H. Mathwig (Daimler)
14:15 Uhr	Formelle Gründung der Working Group	30 Min.	H. Milinkovich (Eclipse)
14:45 Uhr	Sonstiges (u.a. gemeinsame Pressemitteilung)	30 Min.	alle
15:15 Uhr	geplantes Ende der Veranstaltung		

Agenda



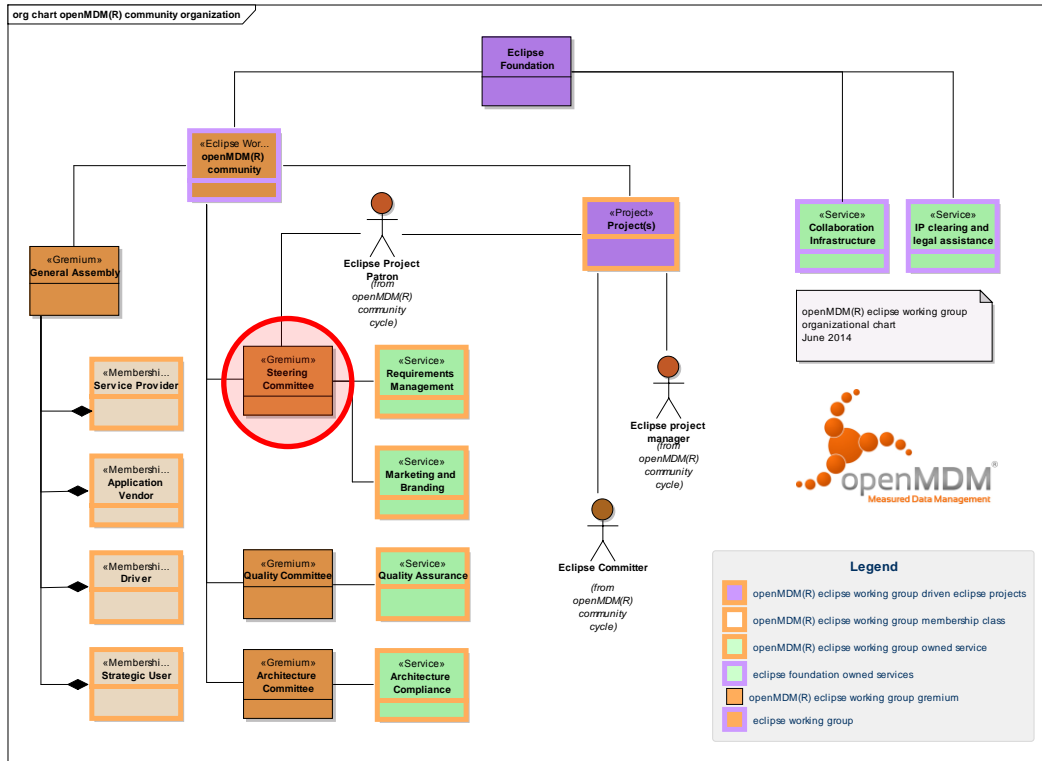
10:00 Uhr	Begrüßung	15 Min.	H. Seitz (Audi)
10:15 Uhr	Vortrag „Eclipse – getting started“	45 Min.	H. Müller (Eclipse)
11:00 Uhr	Kaffeepause	15 Min.	alle
11:15 Uhr	Konstituierung / Wahl der WG-Gremien	60 Min.	alle
12:15 Uhr	Zusammenarbeitsmodell Community Cycle	30 Min.	H. Wittig (Audi)
12:45 Uhr	Mittagspause	60 Min.	alle (Kantine)
13:45 Uhr	Ansätze zum Branding	30 Min.	H. Mathwig (Daimler)
14:15 Uhr	Formelle Gründung der Working Group	30 Min.	H. Milinkovich (Eclipse)
14:45 Uhr	Sonstiges (u.a. gemeinsame Pressemitteilung)	30 Min.	alle
15:15 Uhr	geplantes Ende der Veranstaltung		

Agenda



10:00 Uhr	Begrüßung	15 Min.	H. Seitz (Audi)
10:15 Uhr	Vortrag „Eclipse – getting started“	45 Min.	H. Müller (Eclipse)
11:00 Uhr	Kaffeepause	15 Min.	alle
11:15 Uhr	Konstituierung / Wahl der WG-Gremien	60 Min.	alle
12:15 Uhr	Zusammenarbeitsmodell Community Cycle	30 Min.	H. Wittig (Audi)
12:45 Uhr	Mittagspause	60 Min.	alle (Kantine)
13:45 Uhr	Ansätze zum Branding	30 Min.	H. Mathwig (Daimler)
14:15 Uhr	Formelle Gründung der Working Group	30 Min.	H. Milinkovich (Eclipse)
14:45 Uhr	Sonstiges (u.a. gemeinsame Pressemitteilung)	30 Min.	alle
15:15 Uhr	geplantes Ende der Veranstaltung		

openMDM[®] boards



Composition

Each Driver Member of the WG has a seat in the Steering Committee.
At least one seat is allocated to each class of members different to Driver Members ..

Votes (valid at votings of the gremium, not when establishing it)

Each Driver member on the Steering Committee has three votes. Other Steering Committee members have a single vote.

The Steering Committee - Powers and Duties

The Steering Committee is required to

- Define the strategy of the WG
- Discuss and amend the charter and the participation agreement
- Define and follow marketing and communication activities
- Popularize and defend the openMDM[®] brand
- Initiate and execute an annual membership checkup
- Define and execute a marketing and branding plan
- Maintain a list of the current members of the openMDM[®] WG
- Negotiate the annual working group participation fees towards the Eclipse Foundation with the EMO
- WP Assignment, Delivery and Accounting as defined in the section "Collaboration". Decisions on this topic have to be made with a two third majority vote.

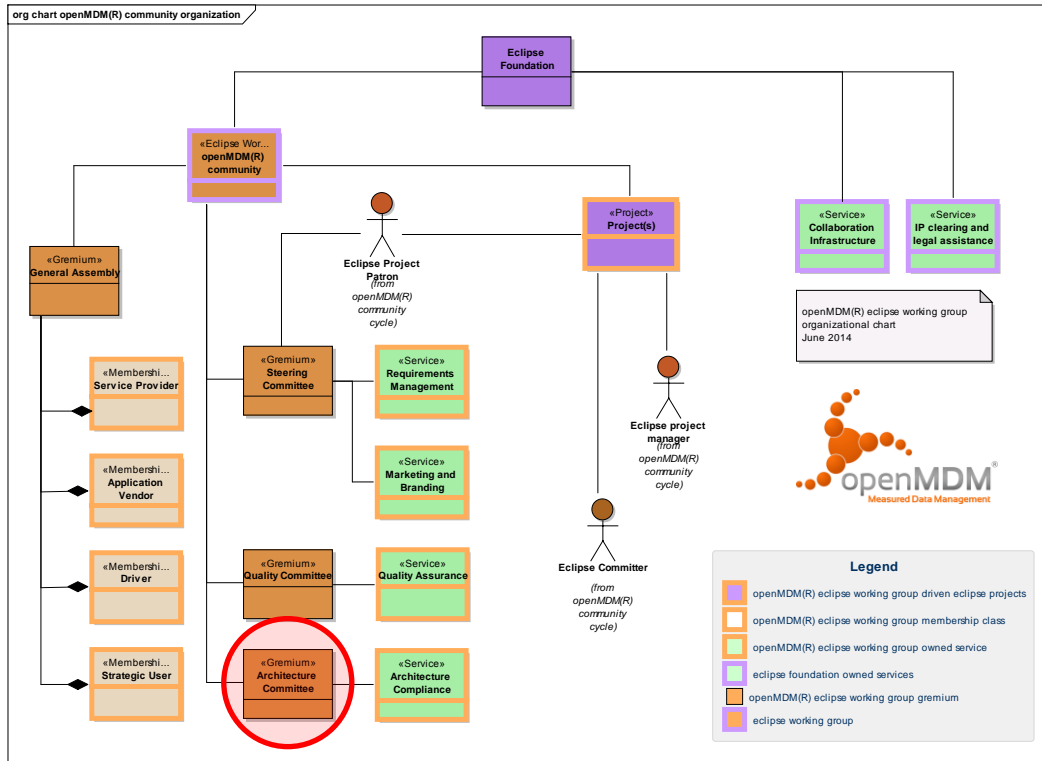
steering committee



Company	membership class	steering committee
AUDI AG	driver	Sven Wittig
BMW AG	driver	Ulrich Bleicher
DAIMLER AG	driver	Gerwin Mathwig
Canoo AG	service provider	(candidate Dr. Hans-Dirk Walter)
Gigatronik GmbH	service provider	(candidate Stefan Holz)
HighQSoft GmbH	application vendor	Hans Bothe
Peak Solution GmbH	service provider	Dr. Hans-Jörg Kremer (elected)
science and computing AG	service provider	(candidate Dr. Dietmar Rapf)
ASAM	Guest member	

chairman: <to be elected by the committee on its first meeting>

openMDM® boards



Composition

Each Driver Member of the WG has a seat on the Architecture Committee.
Each project lead has a seat on the Architecture Committee.

Votes (valid at votings of the gremium, not when establishing it)

Each member on the Architecture Committee has one vote.

The Architecture committee - Powers and Duties

Architecture Committee members are required to

- Ensure the functional consistency of openMDM® projects
- Ensure the non-functional consistency of openMDM® projects
- Ensure the technical consistency of openMDM® projects
- Evaluate and define technologies to be applied
- Establish technical guidelines
- Validate new project proposals and concepts
- Establish the openMDM® architecture compliance service and ensure its availability to the openMDM® projects

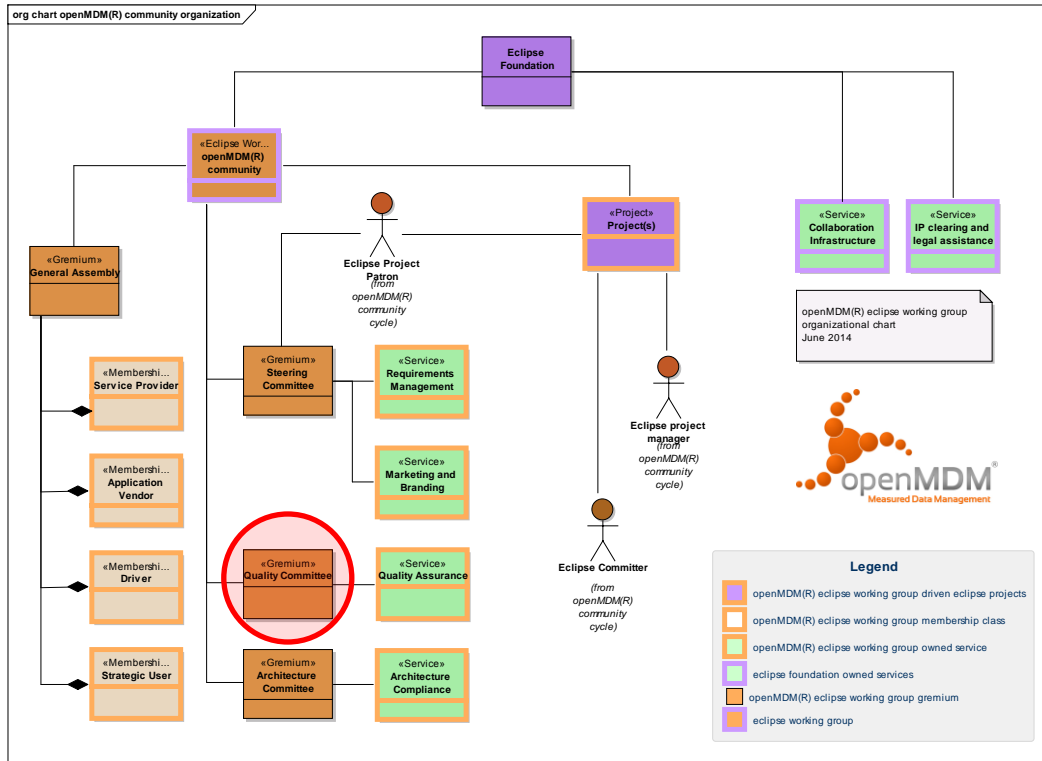
architecture committee



Company	membership class	architecture committee
AUDI AG	driver	Christian Rechner
BMW AG	driver	Stefan Ebeling
DAIMLER AG	driver	Andreas Benzing
Canoo AG	service provider	-
Gigatronik GmbH	service provider	-
HighQSoft GmbH	application vendor	-
Peak Solution GmbH	service provider	-
science and computing AG	service provider	-
project lead MDM@WEB	-	Gerwin Mathwig

chairman: <to be elected by the committee on its first meeting>

openMDM[®] boards



Composition

Each Driver member of the WG has a seat on the Quality Committee.
 Each project lead has a seat on the Quality Committee.
 At least one seat is allocated to each class of members different to Driver members ..

Votes (valid at votings of the gremium, not when establishing it)

Each member on the quality Committee has one vote.

The Quality Committee - Powers and Duties

The Quality Committee members are required to

- Define the WG quality kit and maturity process
- Establish and maintain the openMDM[®] integration environment
- Establish the openMDM[®] quality assurance service and ensure its availability to the openMDM[®] projects
- Provide in-time information to the steering committee on the maturity of the components and results delivered to the community to enable it to decide on the acceptance of a deliverable as valid contribution
- Validate that the projects conform to the WG quality kit.
- Validate that the projects conform to the guidelines established by the architecture committee
- Validate that the projects apply the IP process

quality committee

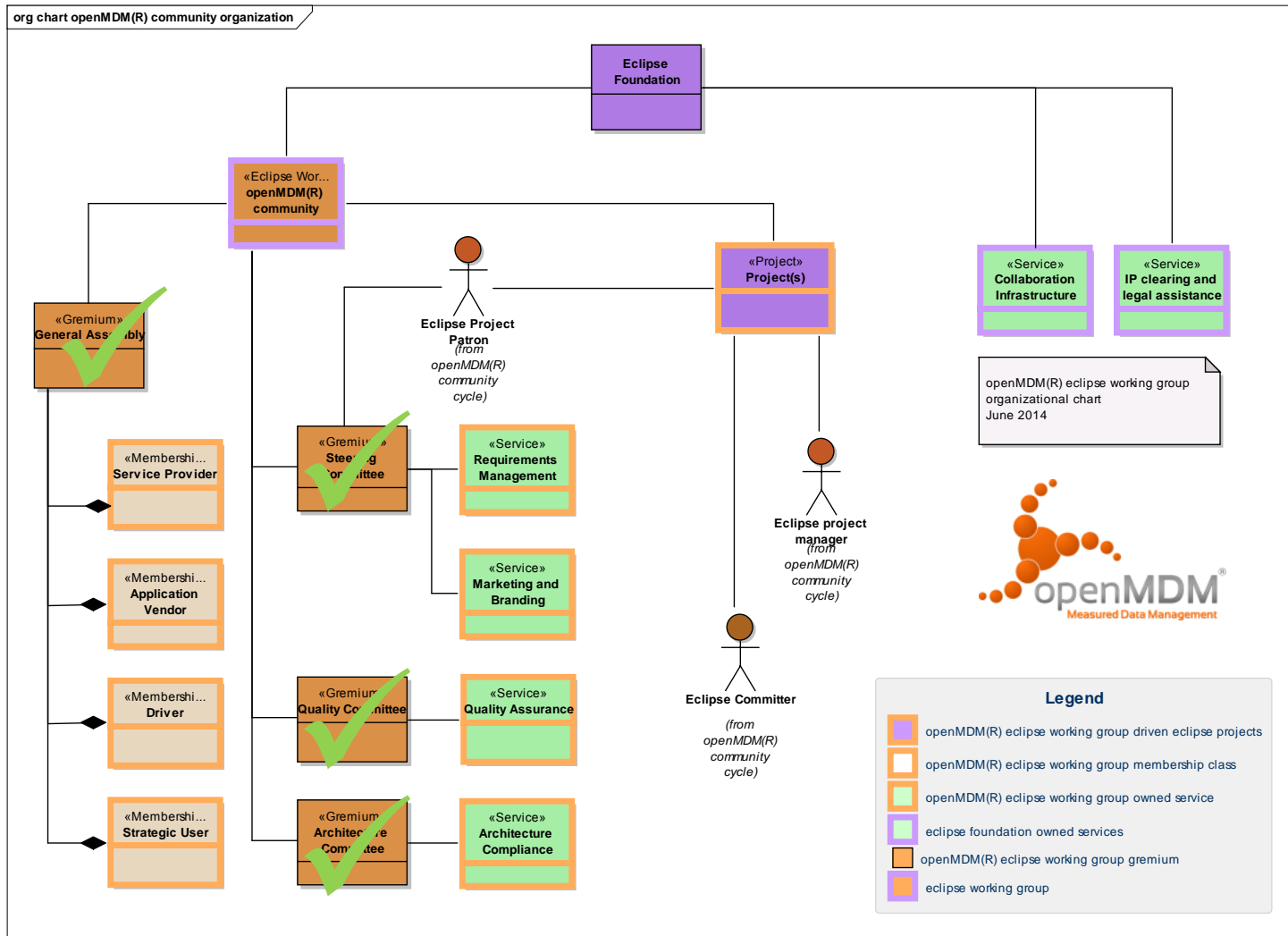


Company	membership class	architecture committee
AUDI AG	driver	Sven Wittig
BMW AG	driver	Ulrich Bleicher
DAIMLER AG	driver	Andreas Benzing
Canoo AG	service provider	Dr. Hans-Dirk Walter (elected)
Gigatronik GmbH	service provider	(candidate Sebastian Dirsch)
HighQSoft GmbH	application vendor	Hans Bothe
Peak Solution GmbH	service provider	(candidate Niklas Hochmuth)
science and computing AG	service provider	(candidate Dr. Dietmar Rapf)
MDM@Web	-	Gerwin Mathwig

chairman:

<to be elected by the committee on its first meeting>

openMDM® boards

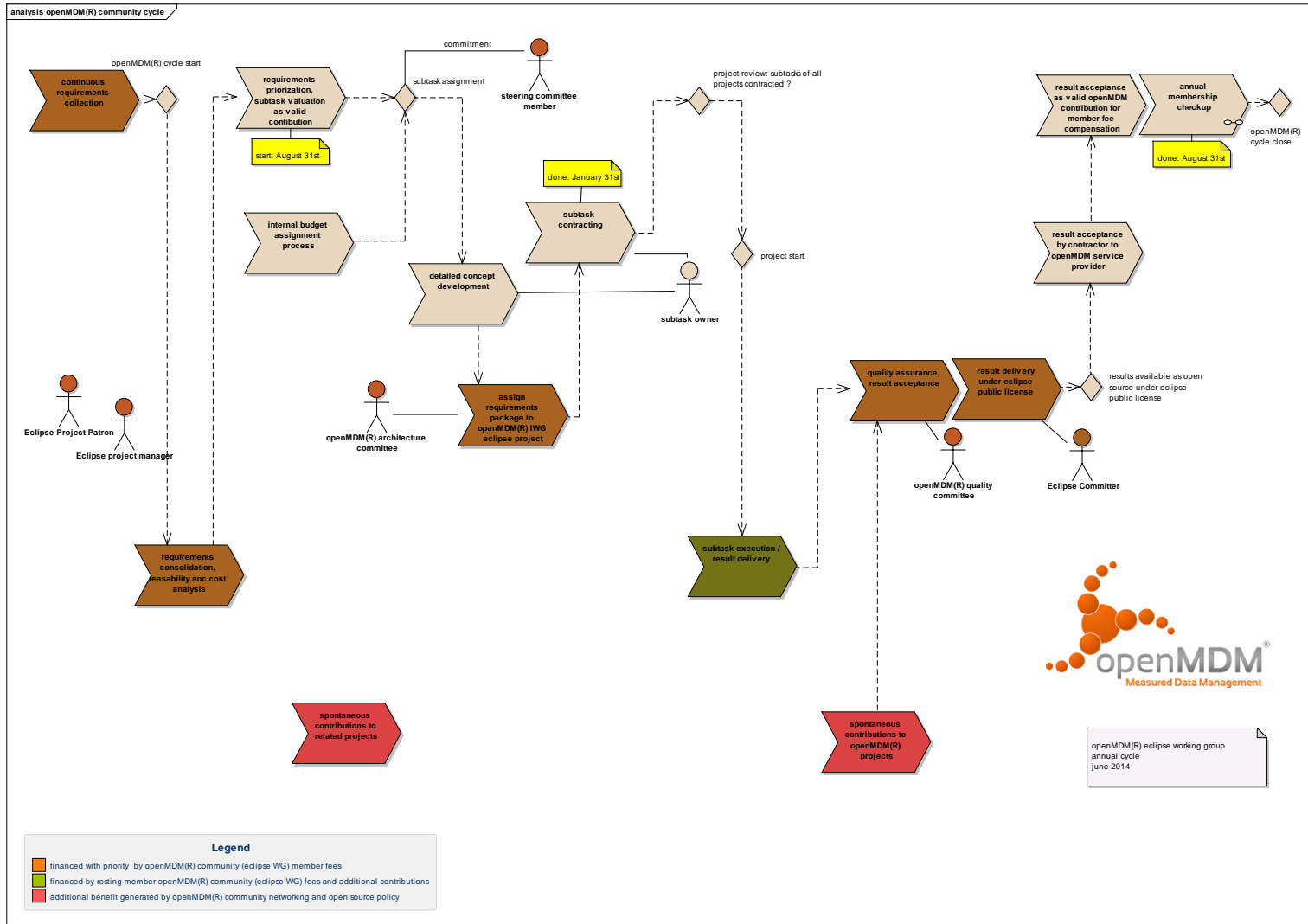


openMDM[®] community cycle

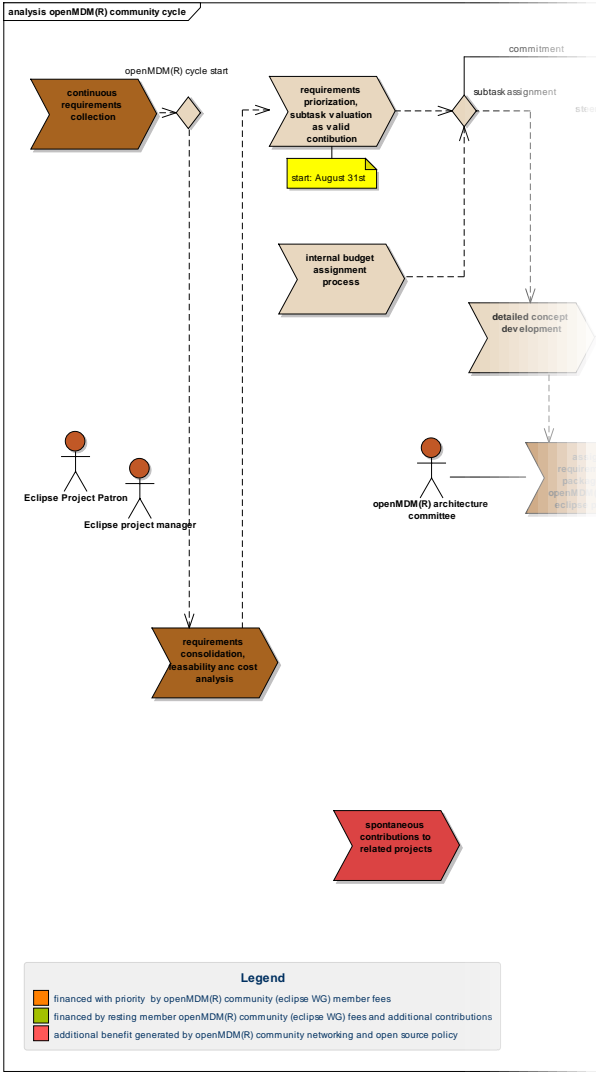


- The openMDM[®] eclipse working group never does act as an commercial entity. All commercial interactions (ordering, payments etc.) exclusively are carried out by the respective organizational units of the member companies under their full responsibility
- work within openMDM[®] eclipse working group comittees is honorary
- work within openMDM[®] eclipse working group services is compensated by openMDM[®] eclipse working group membership fees or additional contributions

openMDM® community cycle



openMDM[®] community cycle

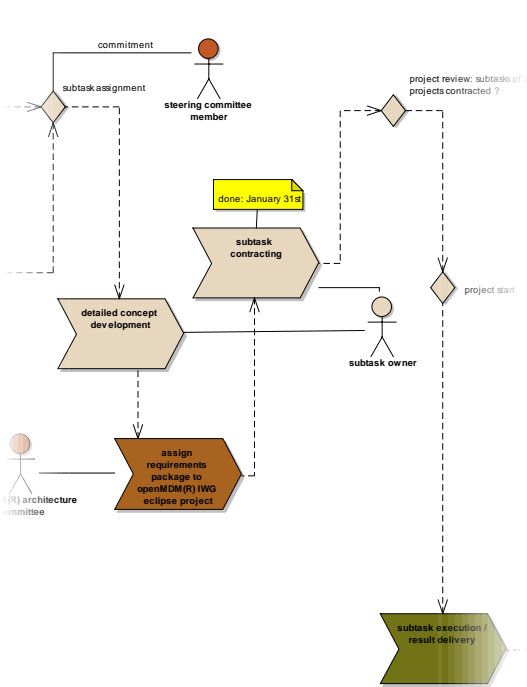


requirements collection
 requirements consolidation
 requirements packaging

openMDM[®] community cycle



**task assignment
order placement**

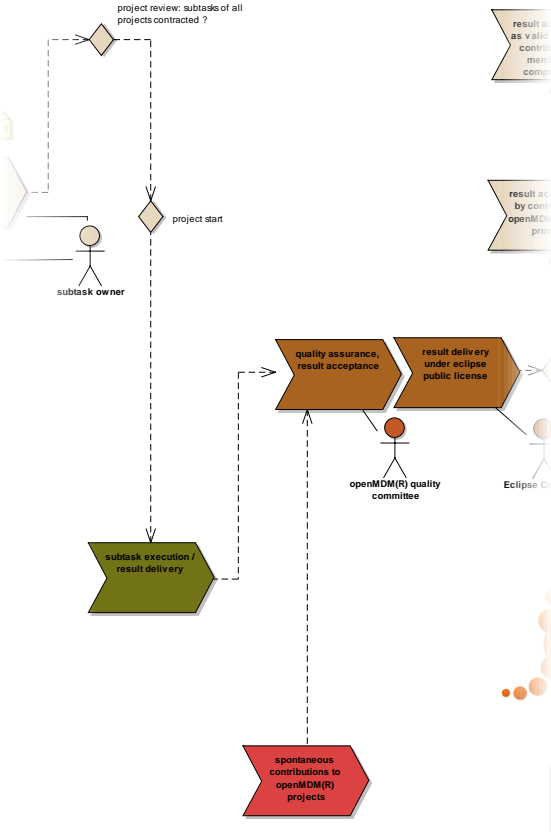


final contributions
use policy

openMDM[®] community cycle



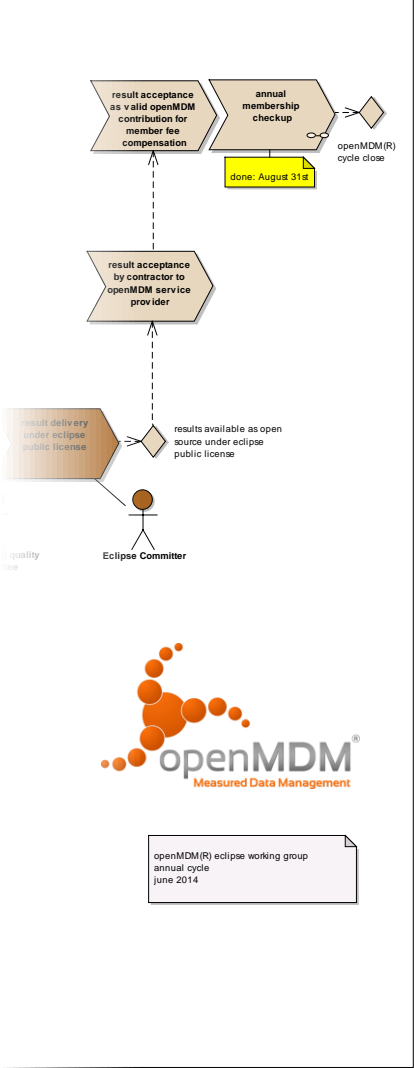
task execution
continuous quality assurance
continuous delivery



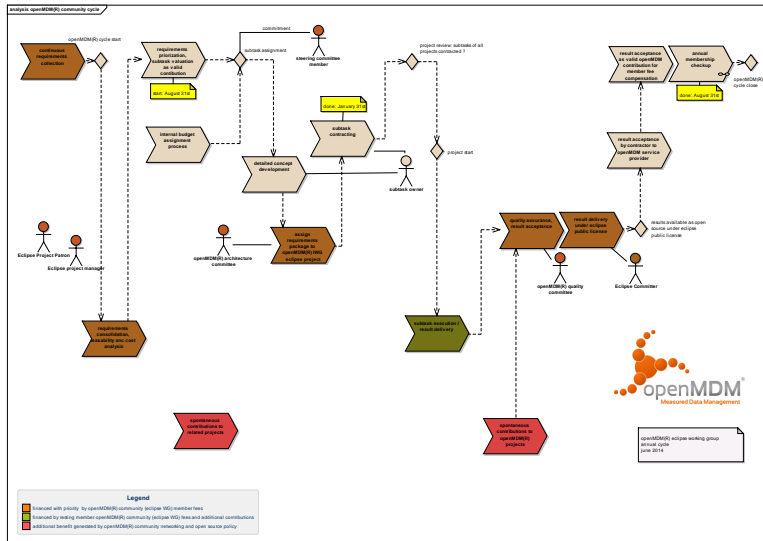
openMDM® community cycle



**result acceptance
membership checkup**



openMDM[®] community cycle



First steering committee meeting:

- elect chairman
- fix existing job split into first community cycle tasks
 - fix and agree temporary testing and quality criteria
 - fix and agree roadmap with respect to community cycle
- define intermediate communication / branding activities
- define roadmap for services establishment
- define milestones for next community cycle

Proposal:

Peak Solution GmbH
July 17th, 2014
Nuremberg

Agenda



10:00 Uhr	Begrüßung	15 Min.	H. Seitz (Audi)
10:15 Uhr	Vortrag „Eclipse – getting started“	45 Min.	H. Müller (Eclipse)
11:00 Uhr	Kaffeepause	15 Min.	alle
11:15 Uhr	Konstituierung / Wahl der WG-Gremien	60 Min.	alle
12:15 Uhr	Zusammenarbeitsmodell Community Cycle	30 Min.	H. Wittig (Audi)
12:45 Uhr	Mittagspause	60 Min.	alle (Kantine)
13:45 Uhr	Ansätze zum Branding	30 Min.	H. Mathwig (Daimler)
14:15 Uhr	Formelle Gründung der Working Group	30 Min.	H. Milinkovich (Eclipse)
14:45 Uhr	Sonstiges (u.a. gemeinsame Pressemitteilung)	30 Min.	alle
15:15 Uhr	geplantes Ende der Veranstaltung		

Agenda



10:00 Uhr	Begrüßung	15 Min.	H. Seitz (Audi)
10:15 Uhr	Vortrag „Eclipse – getting started“	45 Min.	H. Müller (Eclipse)
11:00 Uhr	Kaffeepause	15 Min.	alle
11:15 Uhr	Konstituierung / Wahl der WG-Gremien	60 Min.	alle
12:15 Uhr	Zusammenarbeitsmodell Community Cycle	30 Min.	H. Wittig (Audi)
12:45 Uhr	Mittagspause	60 Min.	alle (Kantine)
13:45 Uhr	Ansätze zum Branding	30 Min.	H. Mathwig (Daimler)
14:15 Uhr	Formelle Gründung der Working Group	30 Min.	H. Milinkovich (Eclipse)
14:45 Uhr	Sonstiges (u.a. gemeinsame Pressemitteilung)	30 Min.	alle
15:15 Uhr	geplantes Ende der Veranstaltung		

Agenda



10:00 Uhr	Begrüßung	15 Min.	H. Seitz (Audi)
10:15 Uhr	Vortrag „Eclipse – getting started“	45 Min.	H. Müller (Eclipse)
11:00 Uhr	Kaffeepause	15 Min.	alle
11:15 Uhr	Konstituierung / Wahl der WG-Gremien	60 Min.	alle
12:15 Uhr	Zusammenarbeitsmodell Community Cycle	30 Min.	H. Wittig (Audi)
12:45 Uhr	Mittagspause	60 Min.	alle (Kantine)
13:45 Uhr	Ansätze zum Branding	30 Min.	H. Mathwig (Daimler)
14:15 Uhr	Formelle Gründung der Working Group	30 Min.	H. Milinkovich (Eclipse)
14:45 Uhr	Sonstiges (u.a. gemeinsame Pressemitteilung)	30 Min.	alle
15:15 Uhr	geplantes Ende der Veranstaltung		