



# ACTF Project Status Update

## June 1<sup>st</sup> 2009

Kentarou Fukuda, IBM





# eclipse Agenda

- Galileo release status update
- Visualization part status update
- Validation part status update
- Release schedule after Galileo



# Galileo release status update

[http://www.eclipse.org/projects/galileo\\_status.php](http://www.eclipse.org/projects/galileo_status.php)

## • Initial Schedule

- ♦ **M4** 1/12/2009
- ♦ **M5** 2/16/2009
- ♦ **M6** 3/23/2009
- ♦ **M7** 5/11/2009 (Feature Freeze)
- ♦ **RC1** 5/25/2009
- ★ **RC2** 6/1/2009 (We are here!)
- ♦ **RC3** 6/8/2009 (API Freeze)
- ♦ **RC4** 6/15/2009

• All milestones (M4-M7), RC1 and RC2 were released on time

• Documentation refinement until RC4

• All 'must do' items and most of 'should do' items were completed on time

### ♦ Exception is 'Usability'

- Updated ACTF UI (icons, perspectives, etc.) to conform to UI guidelines
- UI Checklist is not firm yet, but is scheduled for completion in the next release

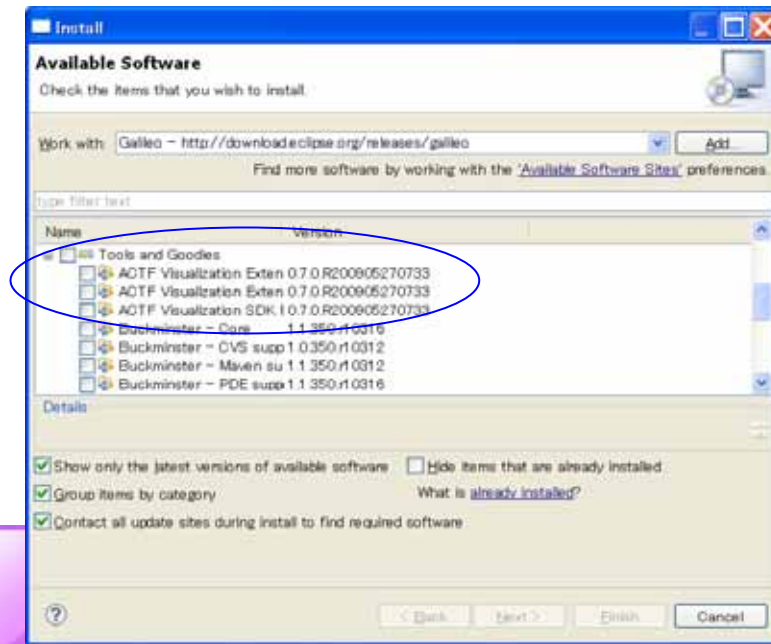
		ACTF Visualization
<a href="#">Attendance</a>	M4	258595
<a href="#">Builds</a>	M4	258606
<a href="#">Communicate</a>	M4	258596
<a href="#">Confirm Intent</a>	M4	258590
<a href="#">Intent</a>	M4	258593
<a href="#">Message Bundles</a>	M4	258599
<a href="#">Optimization</a>	M4	258604
<a href="#">Orbit</a>	M4	258605
<a href="#">Signing</a>	M4	258608
<a href="#">Use Jars</a>	M4	258607
<a href="#">Execution Environment</a>	M5	258602
<a href="#">IP</a>	M5	258597
<a href="#">Leverage OSGi</a>	M5	258601
<a href="#">Ramp Down Policy</a>	M5	258594
<a href="#">Version Numbering</a>	M5	258600
<a href="#">APIs</a>	M5	258598
<a href="#">Capabilities</a>	M5	258613
<a href="#">Localization - Babel</a>	M5	258612
<a href="#">Localization - ICU4J</a>	M5	258610
<a href="#">Branding</a>	RC1	258611
<a href="#">New &amp; Noteworthy</a>	RC1	258603
<a href="#">Work Together</a>	RC1	258609
<a href="#">Accessibility</a>	M4	258618
<a href="#">Usability</a>	M5	258614
<a href="#">Localization - Babel PTT</a>	M5	258617
<a href="#">Localization - UI freeze</a>	M5	258616
<a href="#">Localization - bidi</a>	RC1	258620
<a href="#">Performance</a>	RC1	258619
		<b>27</b>
		<b>-</b>
		<b>1</b>
		<b>-</b>



# Galileo release schedule

- Submit release review docuware (Done: 29th May)
- Submit IP log (3rd June)
- Release review (10th June)
- Galileo release (24th June)
- Galileo Service Releases
  - ♦ SR1: 9/25/2009 (last Friday of Sep.)
  - ♦ SR2: 2/26/2010 (last Friday of Feb.)

Update site: <http://download.eclipse.org/releases/galileo>  
(Tools and Goodies category)



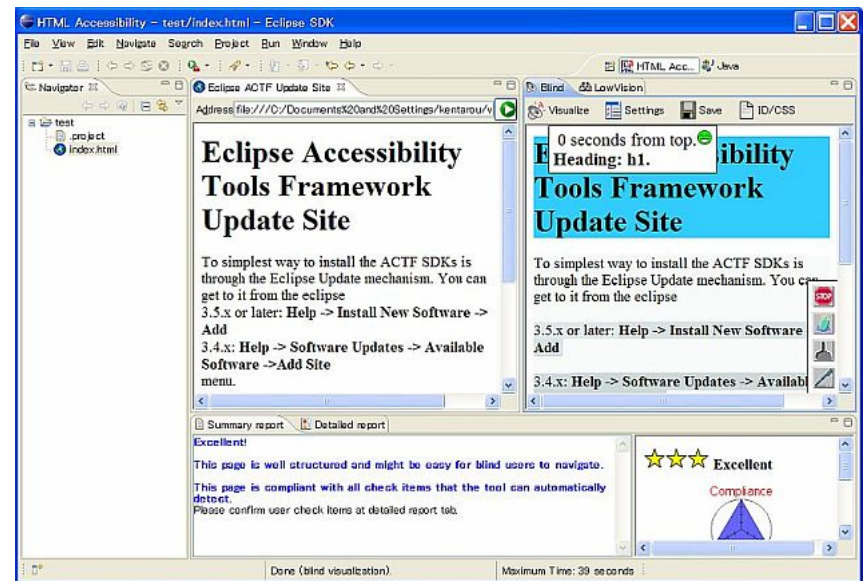
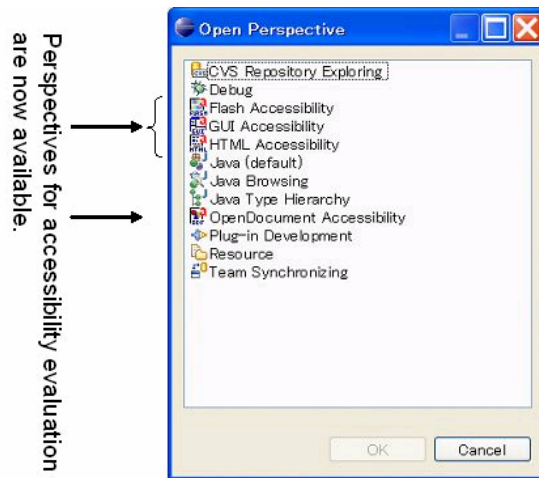


## New and Noteworthy (0.7 M4)

<http://www.eclipse.org/actf/newandnoteworthy/07/actf-07.html>

- IDE integration

- ♦ Major features of visualization components can be used in Eclipse IDE by selecting each accessibility perspective (Flash Accessibility, GUI Accessibility, HTML Accessibility and ODF Accessibility).



- OpenOffice.org 3.x support

- ♦ ACTF ODF Browser now supports latest series (3.x) of OpenOffice.org.





## New and Noteworthy (0.7 M5)

<http://www.eclipse.org/actf/newandnoteworthy/07/actf-07.html>

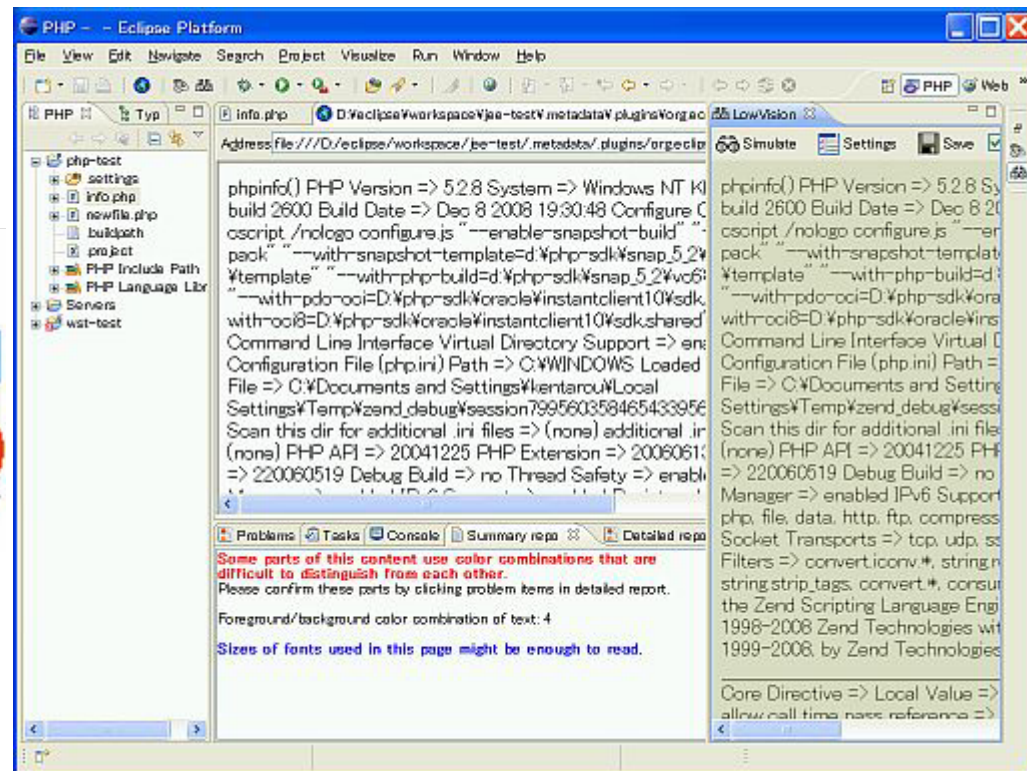
- WST/JST, PDT integration

- ♦ ACTF provides extension features for WST/PDT. Users can use accessibility visualization functions of ACTF in Web, J2EE and PHP perspectives.

Visualization menu



Visualization menu in PHP perspective



Lowvision simulation in PHP perspective



## Status update

- Visualization part
  - ♦ mobileOK integration: Yeliz
  - ♦ Complexity visualization: Eleni
- Validation part: Mike Squillace




# Release schedule after Galileo

- Galileo Service Releases
  - ♦ SR1: 9/25/2009 (last Friday of September)
    - WCAG 2.0 support
    - Usability improvement
  - ♦ SR2: 2/26/2010 (last Friday of February)
- Next simultaneous release
  - ♦ M4: January 2010
  - ♦ ...
  - ♦ GA: June 2010
- Release plan for new features?
  - ♦ mobileOK integration
  - ♦ Complexity visualization





# How to manage release schedules of 3 major parts of ACTF?

- ACTF has 3 major parts (Validation, Visualization and Alternative Interface)
    - ♦ Difficult to schedule simultaneous release of whole parts
      - Due to difference in development schedule, maturity, resource, etc.
- 
- A blue double-headed arrow pointing both up and down, indicating a relationship or flow between the two main bullet points.
- ♦ Current Eclipse process assumes a project level release
- 
- A possible solution
    - ♦ Divide project into 4 sub projects
      - Common: common infrastructure for 3 major parts
      - Validation
      - Visualization
      - Alternative Interface
- 
- Other ways?
    - ♦ Ask Technology-PMC/Mentor for advice.



# ACTF architecture overview

## Tools and Runtimes on top of ACTF

